

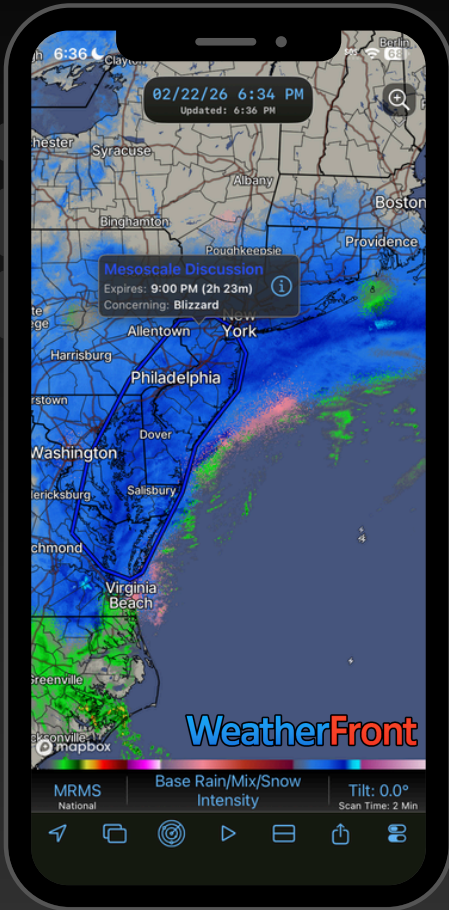
WeatherFront User Guide

Your one-stop shop for weather data on a mobile device.

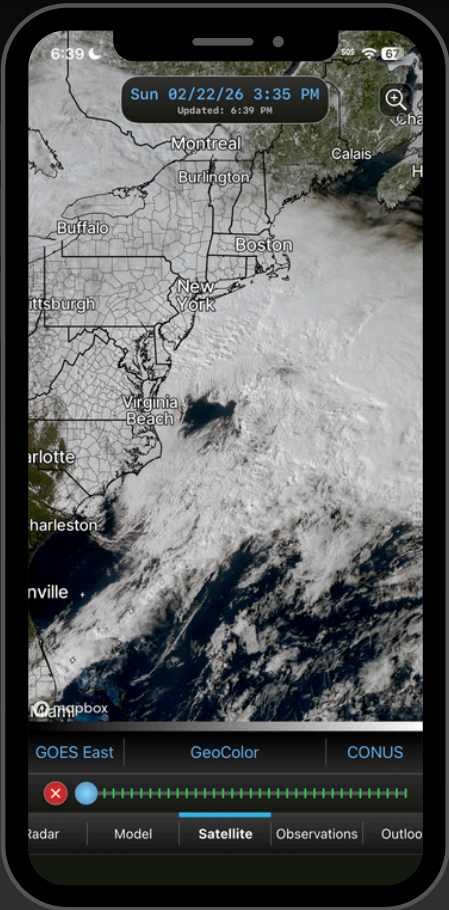
App Overview

WeatherFront

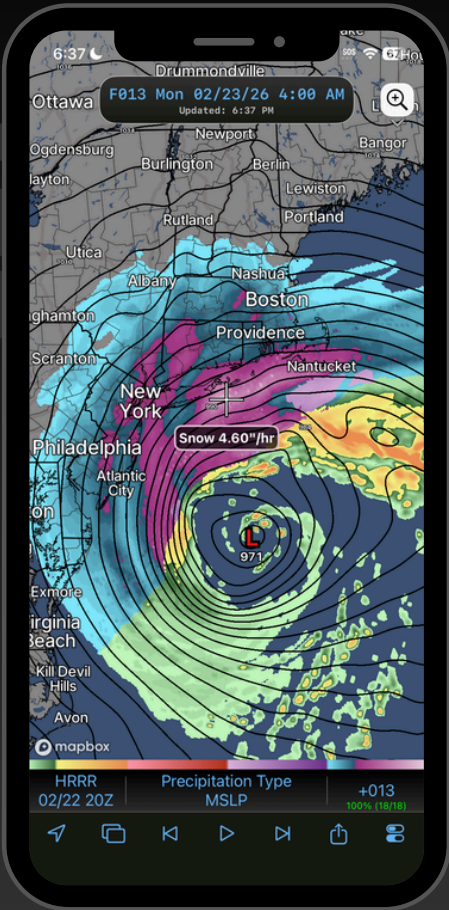
A FREE Professional Weather App



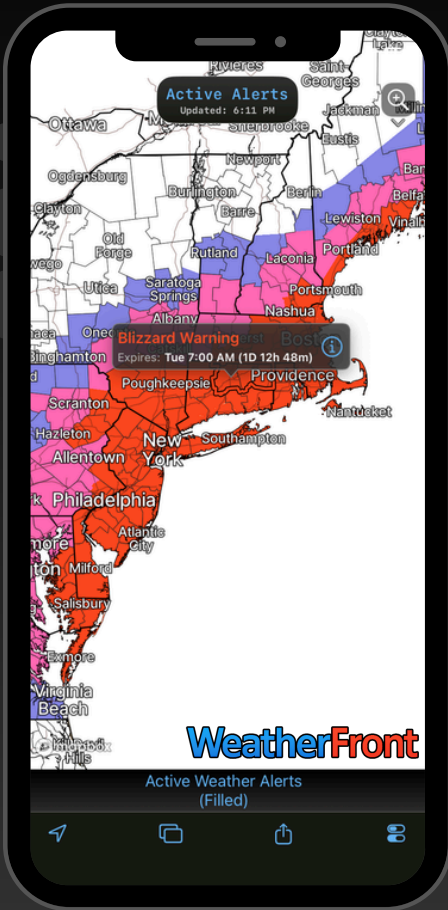
Radar



Satellite



Models



NWS Alerts



WeatherFront

Your one-stop shop for weather data on a mobile device

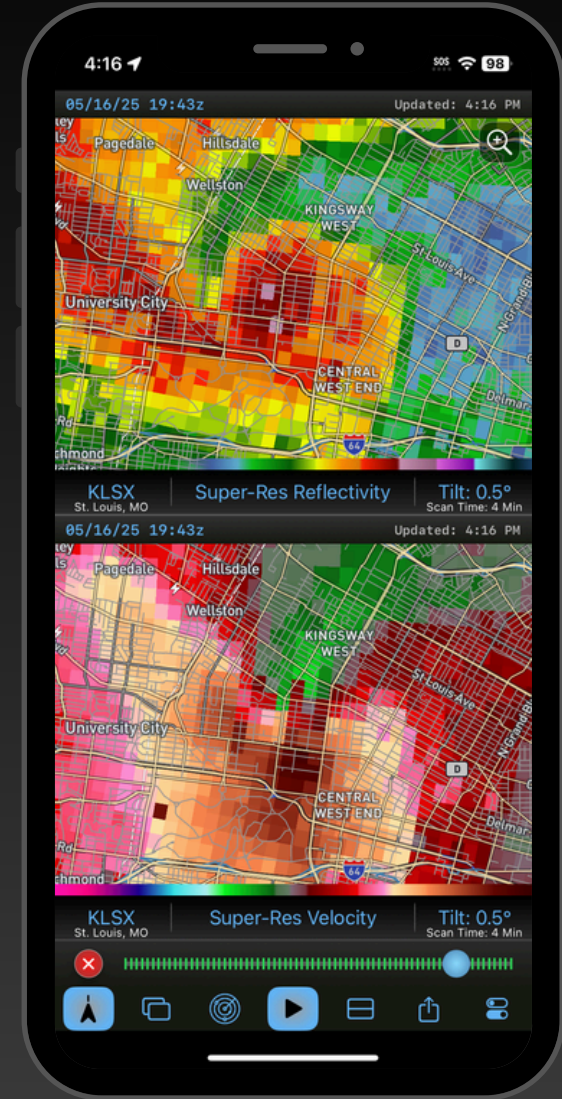
and more...

FREE Radar Features **WF**

- National Radar Mosaic (MRMS)
- US & Canadian Radars
- Rain/Mix/Snow Intensity Algorithm
- Dual-Pane
- **Press and hold to switch to the nearest radar**
- 24-hour loops
- Draw, Measure, Sample Tools

Plus...

Access 80+ MRMS algorithms with a subscription to WF Advanced!

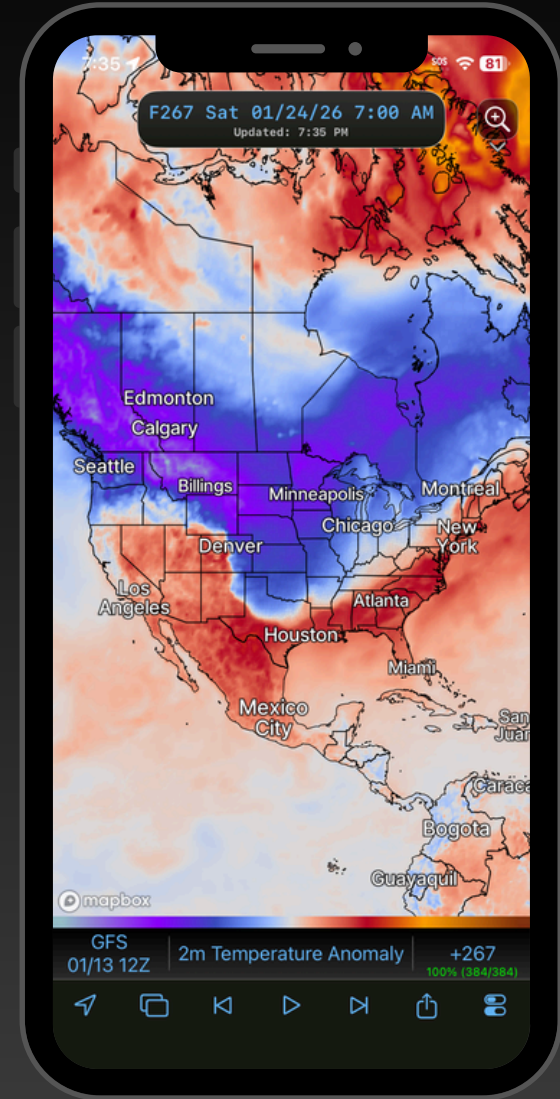


WeatherFront

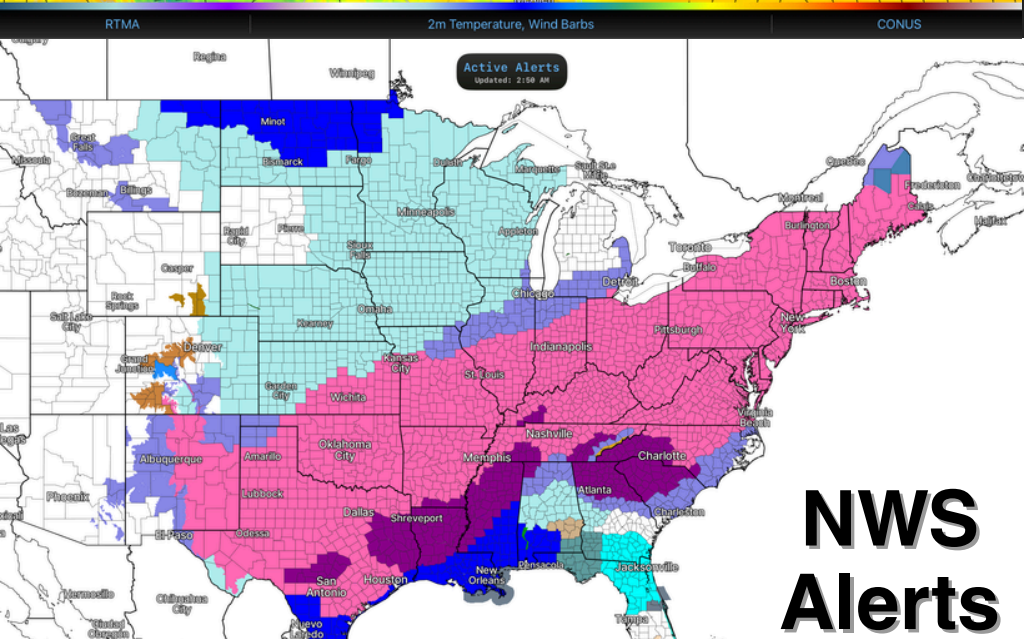
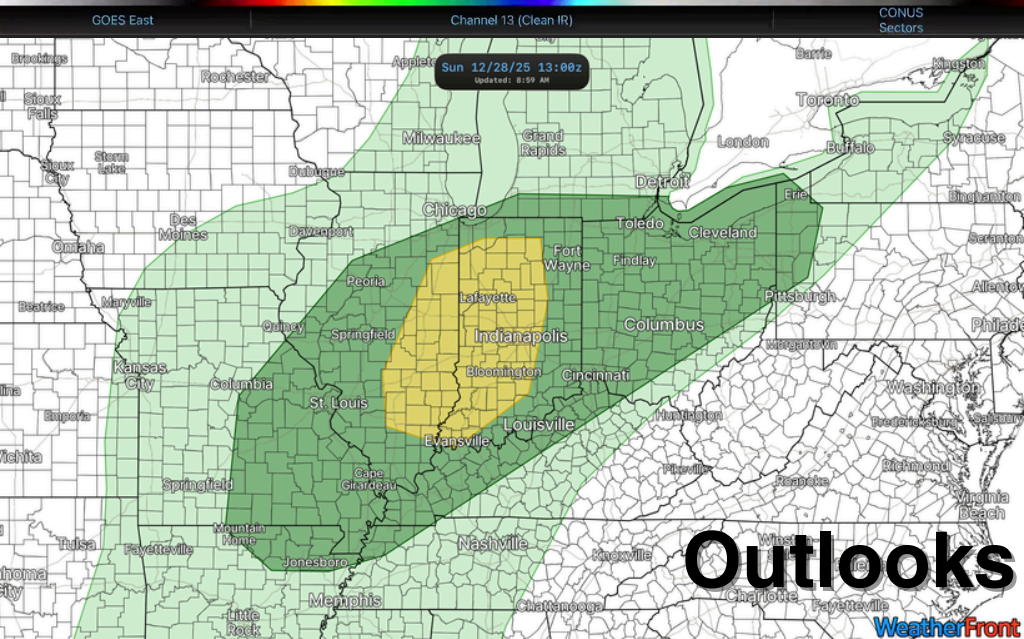
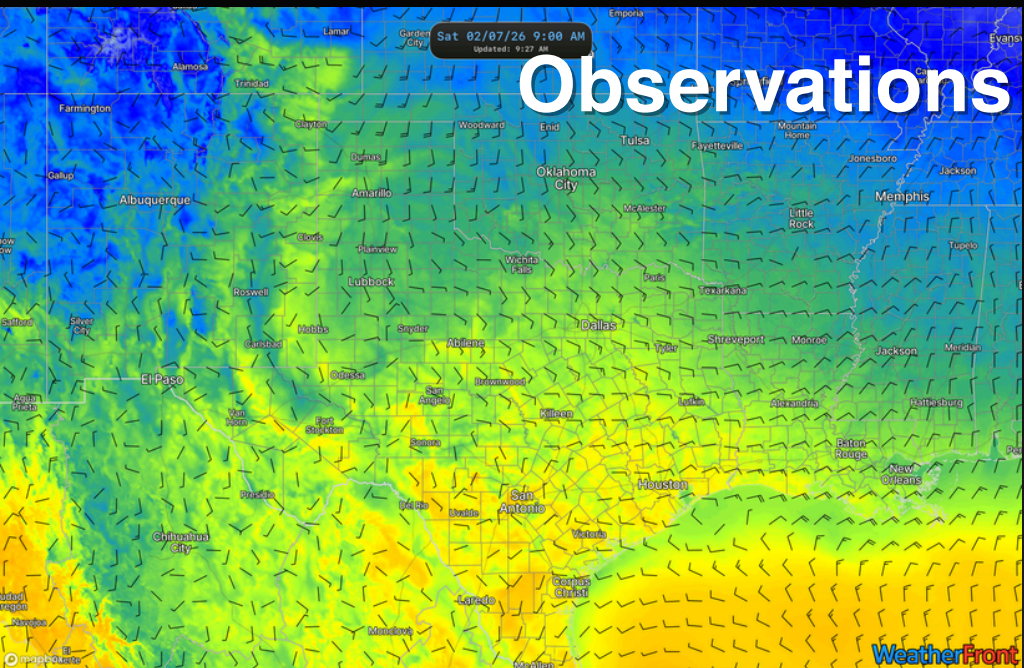
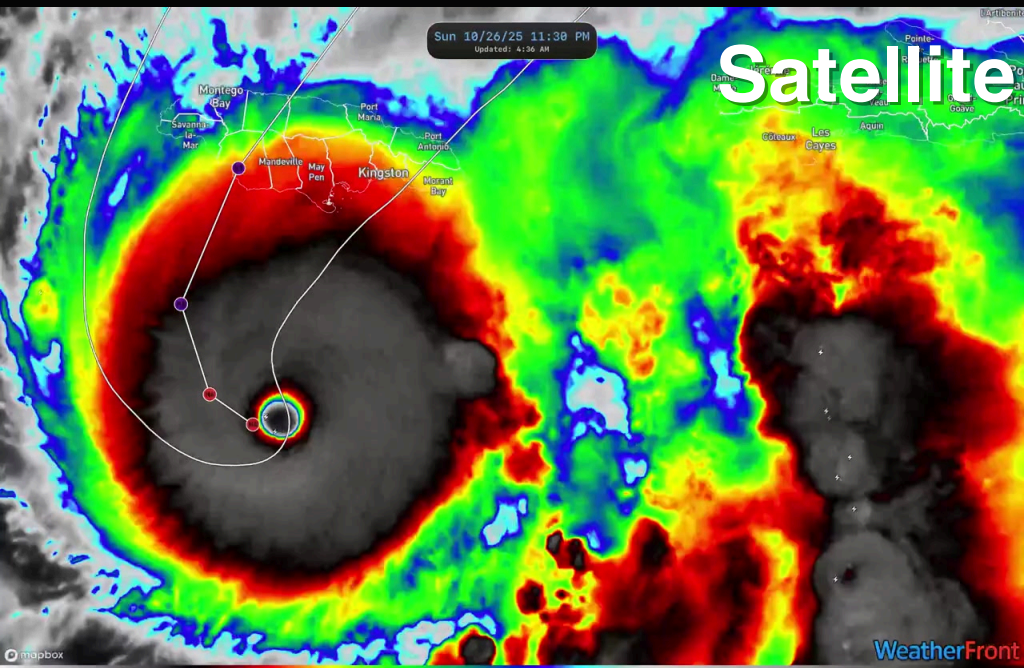
Model Features



- Model viewing optimized for a mobile device
- Dynamic zooming and scrolling
- 25+ models & ensembles
- Model- and model-run comparison
- **Press and hold to generate a model sounding**
- Mesoanalysis Sounding Tool on Radar and Satellite Tabs



Other Products



Forecast Discussion	Categ.	Tornado	Wind	Hail
D1 - Sun 12/28 Slight		5%	15%	0%
D2 - Mon 12/29 No Thunder				
D3 - Tue 12/30 No Thunder				

Convective Outlook

Active Weather Alerts (Filled)

iOS App Tutorial

WeatherFront

Program Layout

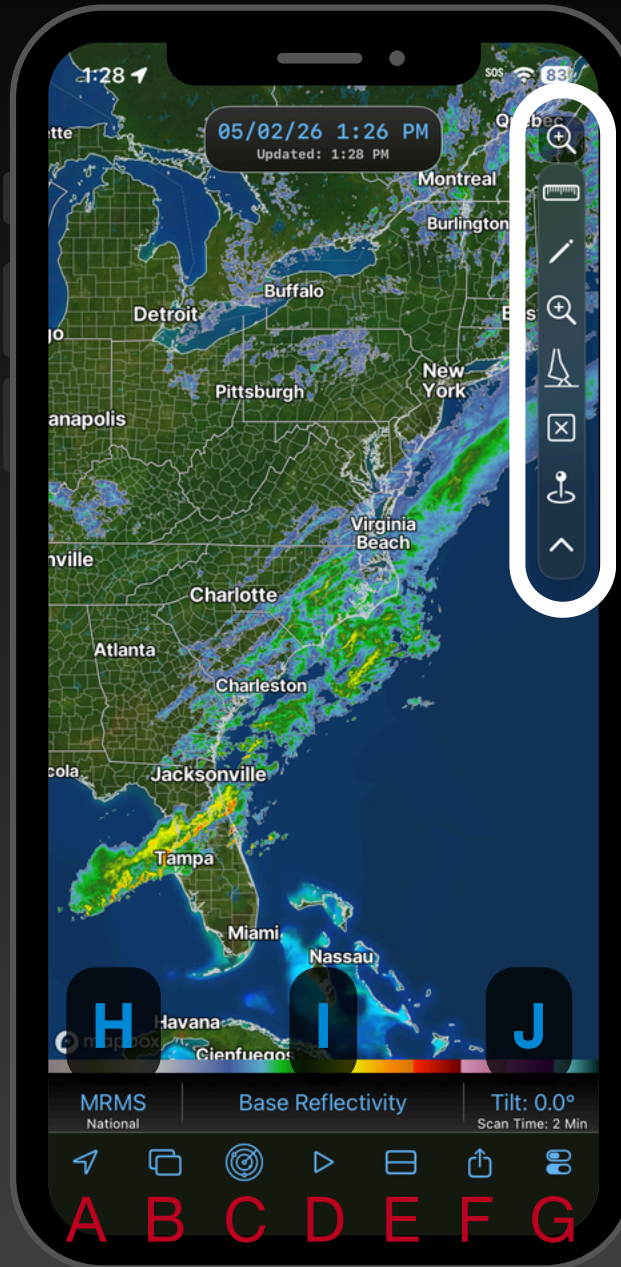


1. Navigation Menu

- A - Display GPS Location
- B - Data Tab Selector
- C - Radar Selector
- D - Play/Loop
- E - Dual Pane
- F - Export
- G - Settings

2. Product Menu

- H - Source Selector
- I - Product Selector
- J - Tilt/Hour/Domain



3. App Tools Menu

- Measure
- Draw
- Sample
- Mesoanalysis
- Sounding Tool
- Toggle
- Route Planning

Navigation Menu



A



B



C



D



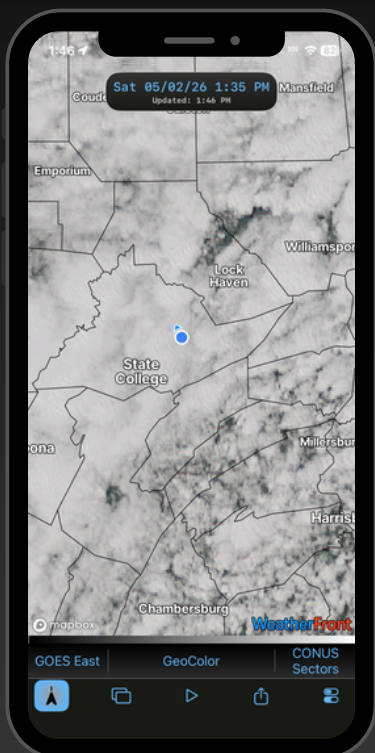
E



F

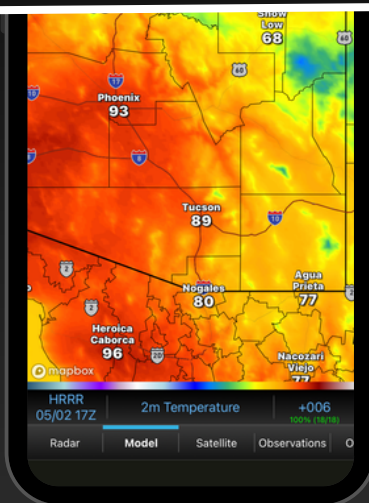


G



A - GPS Arrow

1 click for GPS dot
2 clicks for arrow



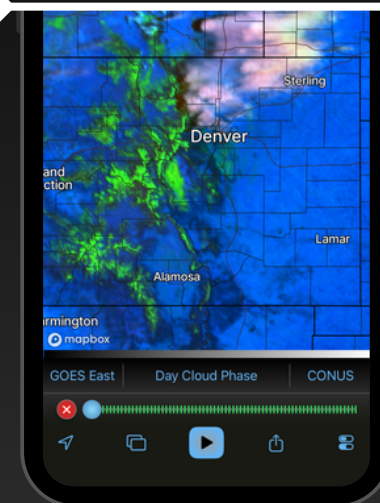
B - Overlapping Rectangles

Switch between the Radar, Models, Observations, Outlooks, and Mapping tabs



C - Radar Selector

Activate to view radar locations



D - Play/Loop

Loop through data automatically or manually scroll back and forth

Navigation Menu



A



B



C



D



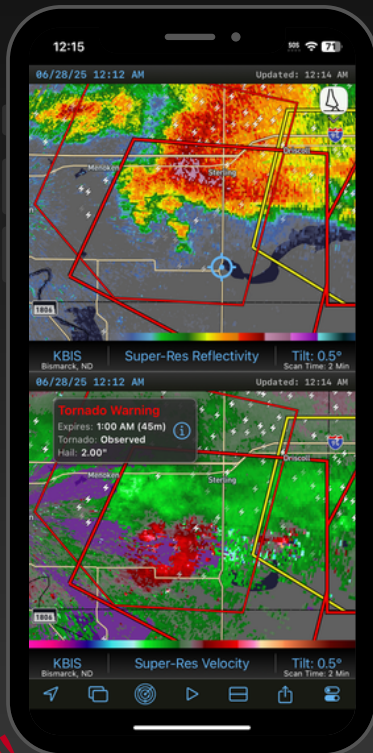
E



F

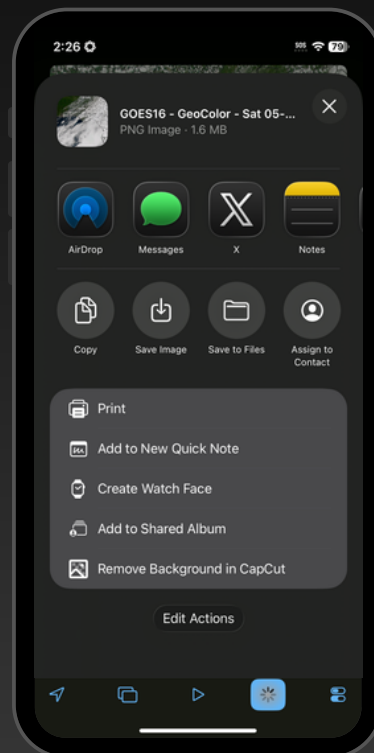


G



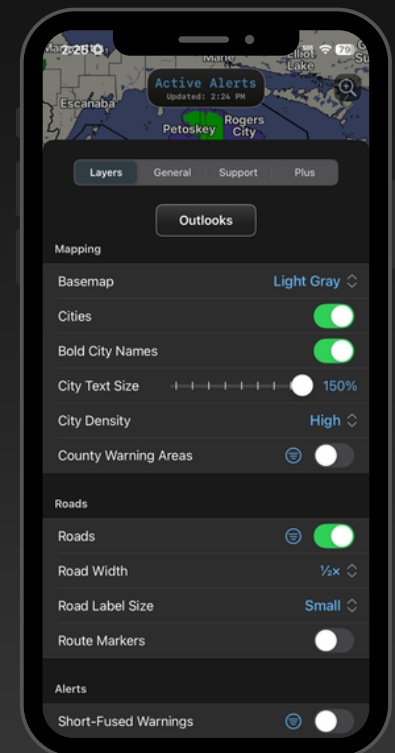
E - Dual Pane

View multiple radar variables in portrait or landscape mode



F - Export

Save an image or loop to your phone & export to any app



G - Settings Menu

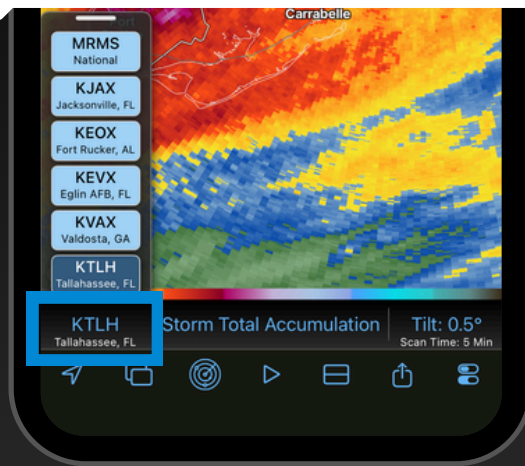
Customize settings & subscribe to WF

FREE
in WFL

Product Menu



Source Selector



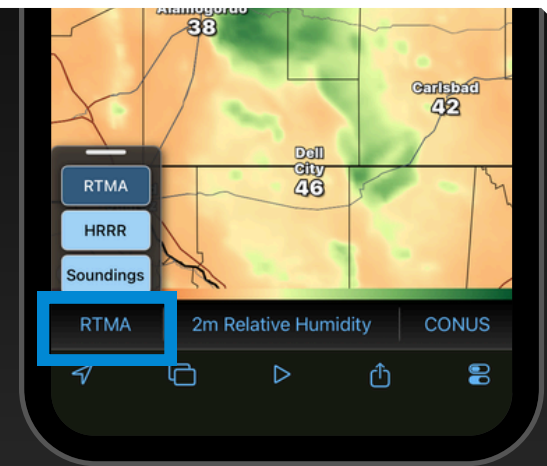
Radar Tab:

- Select MRMS or a local radar
- List includes radars closest to the map center
- MRMS will always be available at the top
- Alternatively, long press anywhere on the map to switch to the closest radar



Model Tab:

- Select a model (1 click) or model run (2 clicks)
- Activate Model Comparison or Model Run Comparison by clicking the buttons at the top of each list



Observations Tab:

- **HRRR Analysis:** Includes the first hour of the last 48 runs of the HRRR model.
- **RTMA:** Real-time mesoanalysis data
- **Observed Soundings:** View data from NWS upper-air launches

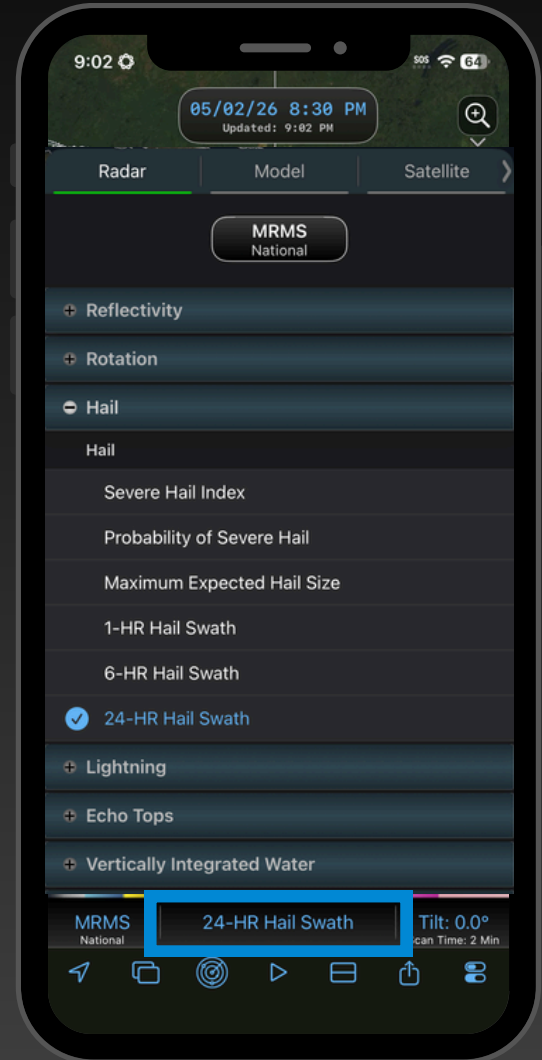
Product Menu



Product Selector

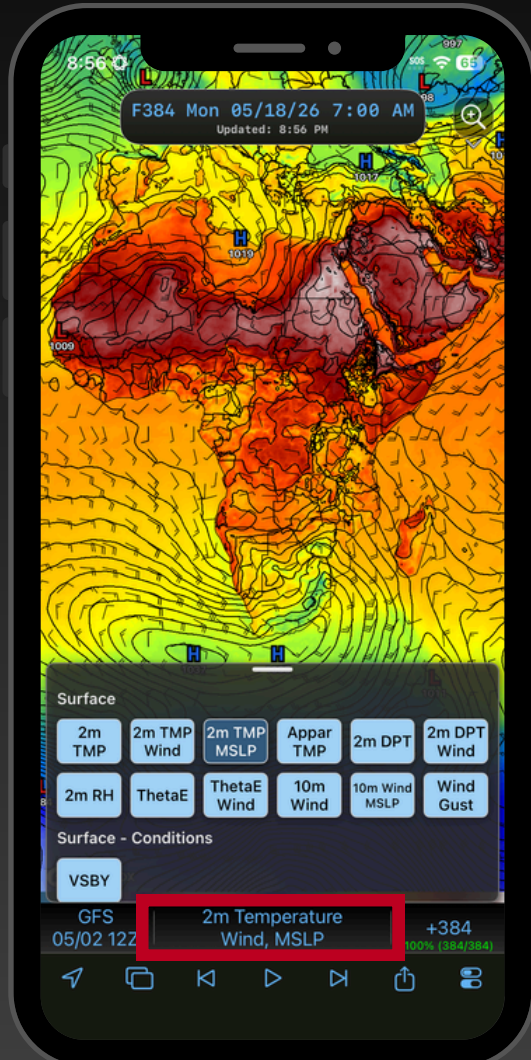
Full Product Menu

- Single Click on the current product to display a full product menu
- Navigate all the products in WeatherFront with ease



Product Selection Quick Menu

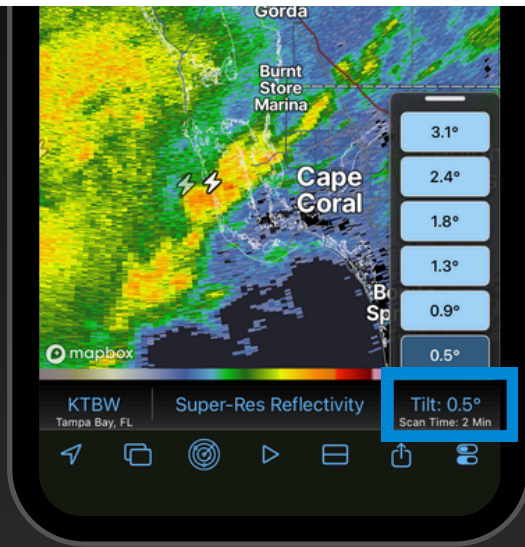
- Long press on the current product to display a quick menu
- Easily swap between radar products, model variables, or satellite channels



Product Menu



Tilt / Hour / Domain



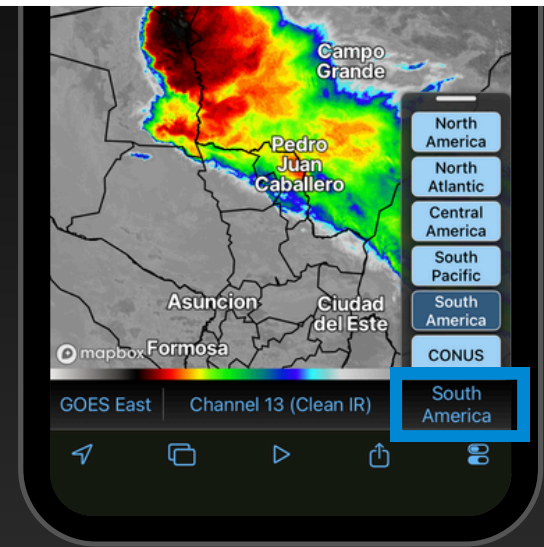
Radar Tab:

- Choose a radar elevation angle/tilt for any local NWS, Canadian, or international radar site.
 - All elevation angles up to 3.1° are available!



Model Tab:

- Manually select a model output hour:
 - Sorted by day/date
 - Shows the model run hour (+003 = 3rd hour)
 - Lists the valid time in UTC/Zulu



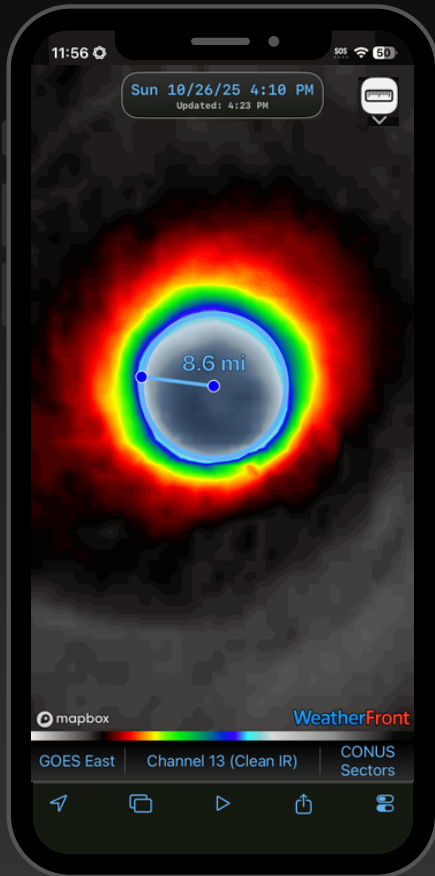
Satellite Tab:

- Select the satellite domain:
 - North, Central, & South America
 - North Atlantic & South Pacific
 - CONUS & CONUS Sectors
 - Meso-1 & Meso-2

App Tools Menu

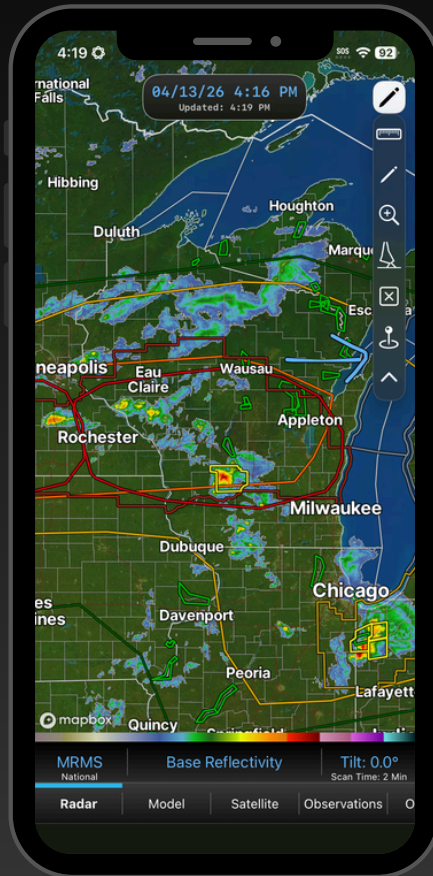


Measure



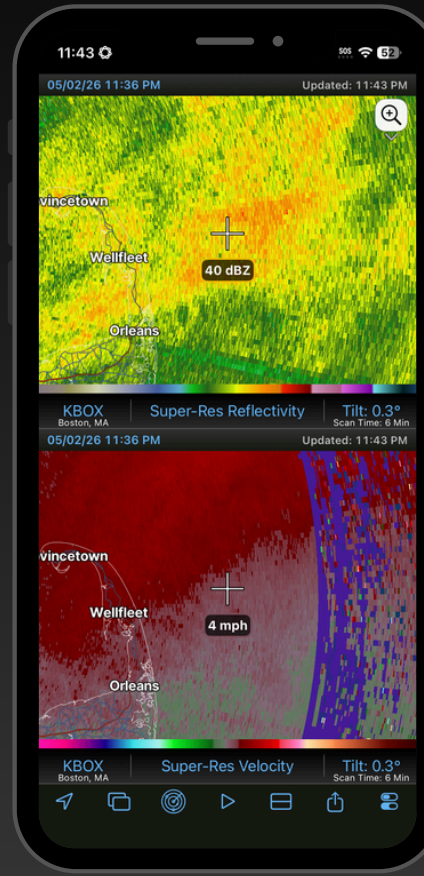
Measure distance between two objects by dragging your finger along the screen.

Draw



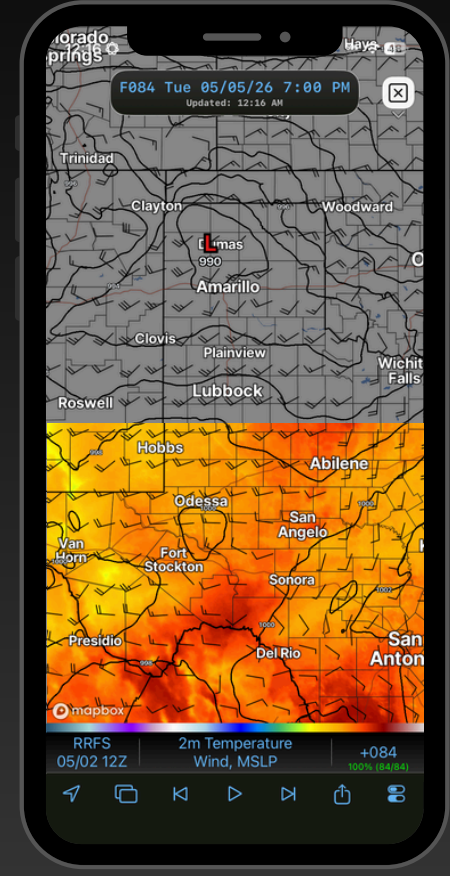
Choose from a full palette of colors as you annotate storm motion or highlight important features

Sample



Turn on the magnifying glass to sample data values on radar, satellite, and model data

Toggle



Toggle off the plotted data to make your basemap easier to see or to assist with navigation

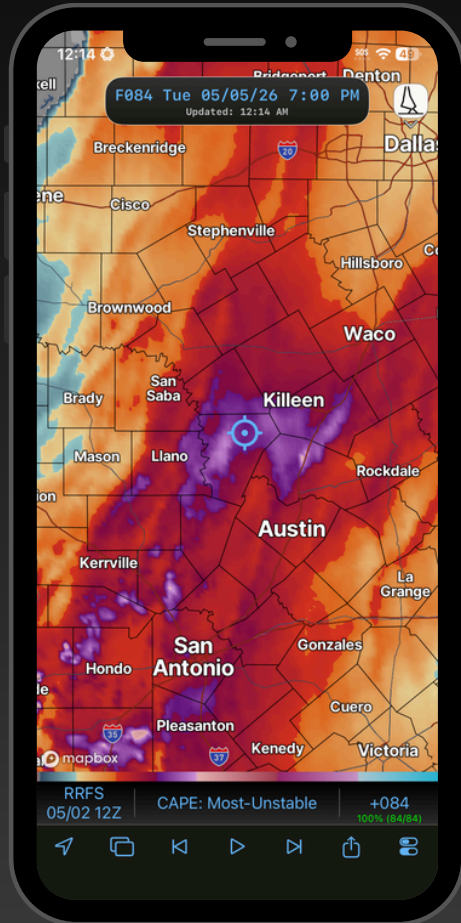
Sat 05/02/26 11:39 PM
Updated: 11:42 PM

Swipe Down Top Right

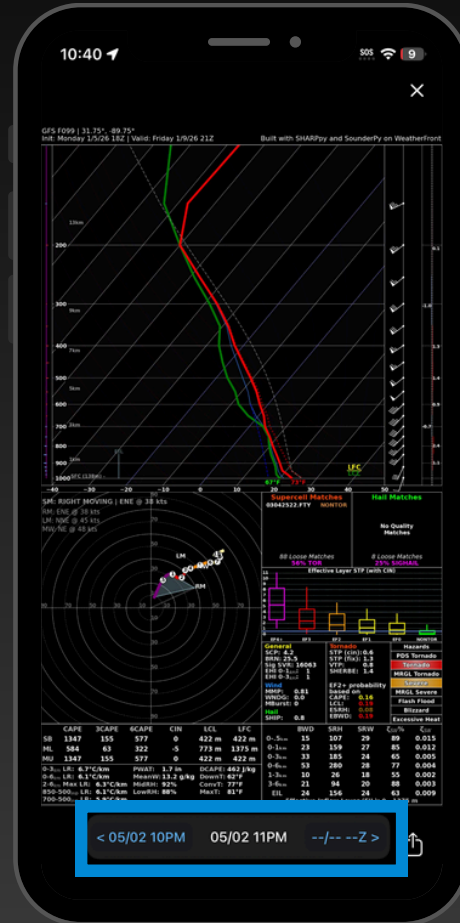


App Tools Menu

Mesoanalysis Sounding Tool



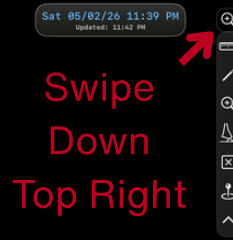
1. Activate by selecting the icon that looks like a sounding
2. Long press on the map while viewing radar, satellite, observations, or outlooks
3. Sample the near-storm environment & view a sounding in portrait or landscape mode



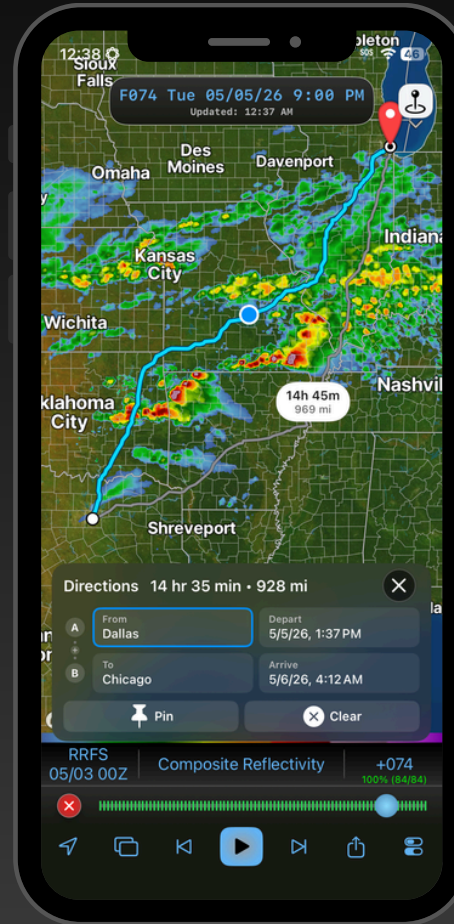
4. Investigate the sounding profile by pinching to zoom in
5. Use the arrow keys at the bottom to click backward and forward in time to watch the cap break or low-level jet get stronger.
6. Export the sounding loop and share it with your friends

App Tools Menu

Location Search / Route Planning



1. Click on the location pin icon in the App Tools Menu to begin
2. Select a location by (1) using the search bar or (2) long pressing anywhere on the map
3. Pin the location on the map or calculate a route from your current location by clicking Routes



4. Optionally edit your departure time, arrival time, or starting location
5. Add a waypoint by clicking the plus sign between A and B and repeating step 2
6. On the Models tab, press play and scroll through your route to determine what conditions to expect

Settings Menu



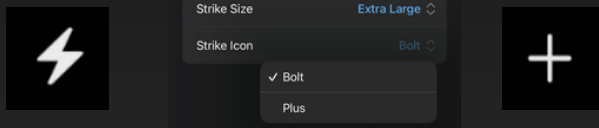
Bottom
Right
Icon



Layers Tab - Data Section

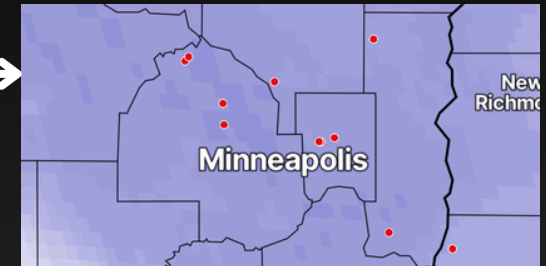
GOES-East GLM Strikes (Lightning)

- Adjust Strike Size & Strike Icon by clicking the blue circle



Spotters

- View spotter locations via Spotter Network

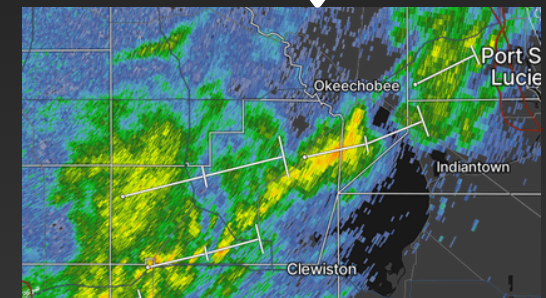


Storm Reports

- Filter by source (SPC/NWS or Spotter Network) & type

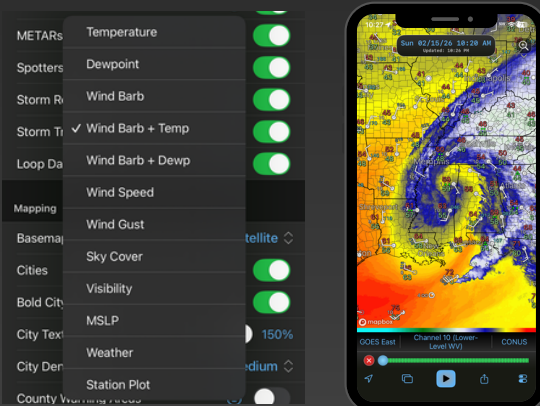
Storm Tracks

- Visualize storm motion and speed



METARs

- Click the blue text to configure which values display on the map



SPC/NWS Reports

- Tornado
- Hail
- Wind

Spotter Network Reports

- Tornado
- Funnel Cloud
- Wall Cloud
- Rotation
- Hail
- Wind
- Flash Flood
- Flood
- Damage
- Other

Loop Data

- GOES-East GLM Strikes
- METARs
- Storm Reports

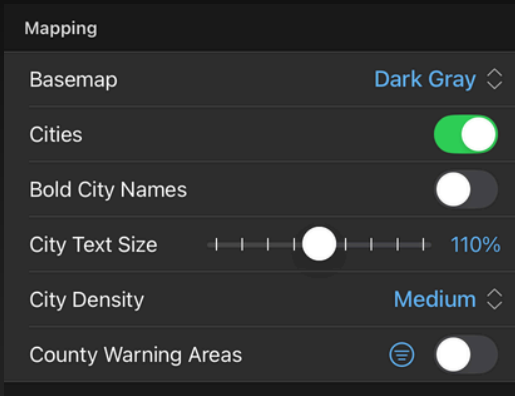
Settings Menu



Bottom
Right
Icon

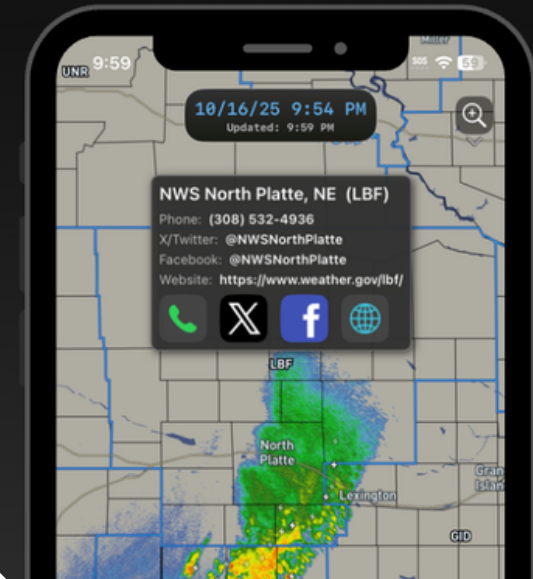


Layers Tab - Mapping Section



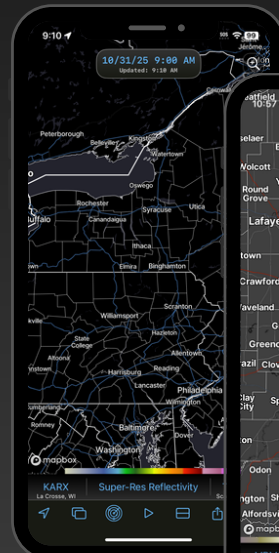
City Settings

- Toggle city names on/off
- Make city names bold so they stand out more
- Adjust text size and density



Basemaps

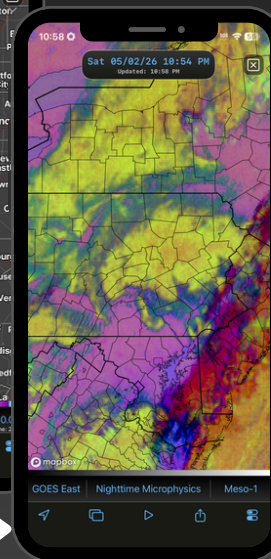
- Choose from the following:
 - Satellite
 - Satellite 2
 - Black
 - Dark Gray
 - Medium Gray
 - Medium Gray 2
 - Light Gray
 - White



Default City
Settings



Cities Off



Max City Density
Bold City Names

County Warning Areas

- Toggle on to view NWS office boundaries
- Click blue circle to toggle on WFO labels
- On map, click WFO labels to display contact info & send reports to an office

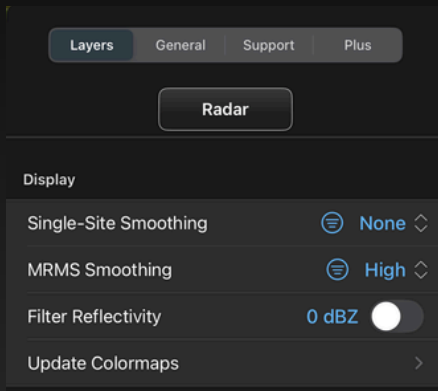
Settings Menu



Bottom
Right
Icon



Layers Tab - Display (Radar)

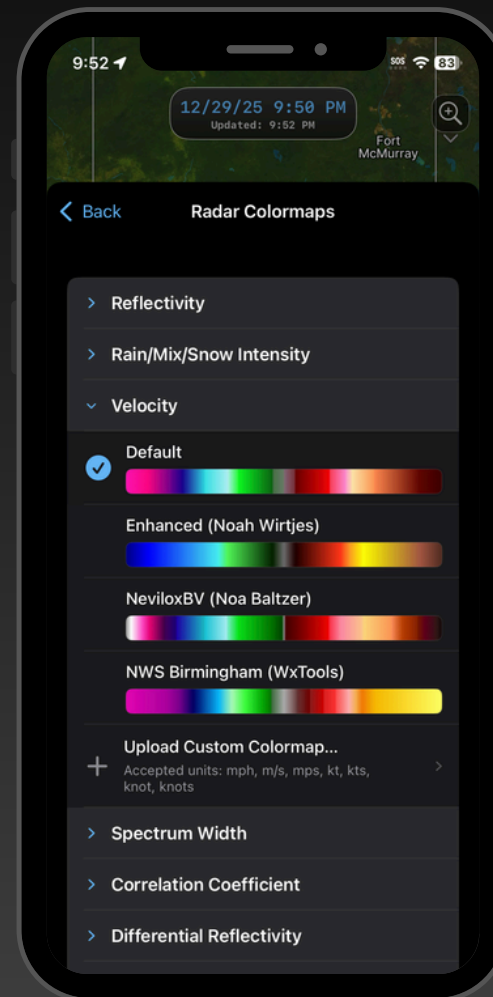
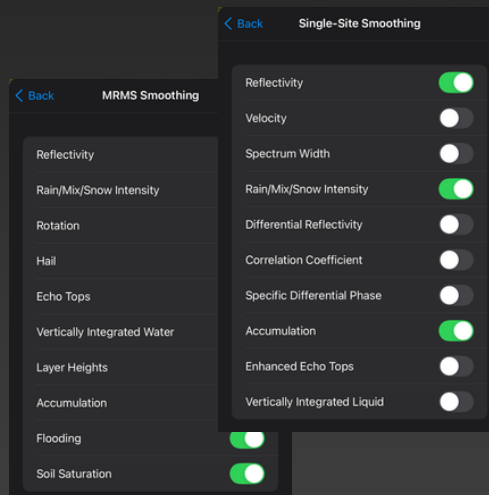


Filter Reflectivity

- Set minimum radar value to display in increments of 10 dBZ from -10 to +40

Smoothing

- Set level of smoothing for Single-Site radars and MRMS (national mosaic)
- Select which variables will be smoothed by clicking the adjacent blue circle



Update Colormaps

- Choose from defaults
- Download new colormaps from links at the bottom of the list
- Upload new colormaps in a .pal format by clicking the plus sign under each variable
- Delete colormaps by swiping left

[Custom Colormap Tutorial Video](#)

We're working on more content!

In the meantime, check out these resources:



[WF Tutorial Playlist](#)



[Search #WFFeatureFriday on X](#)

Still have questions?

Send an email to support@wxfront.com!

WeatherFront